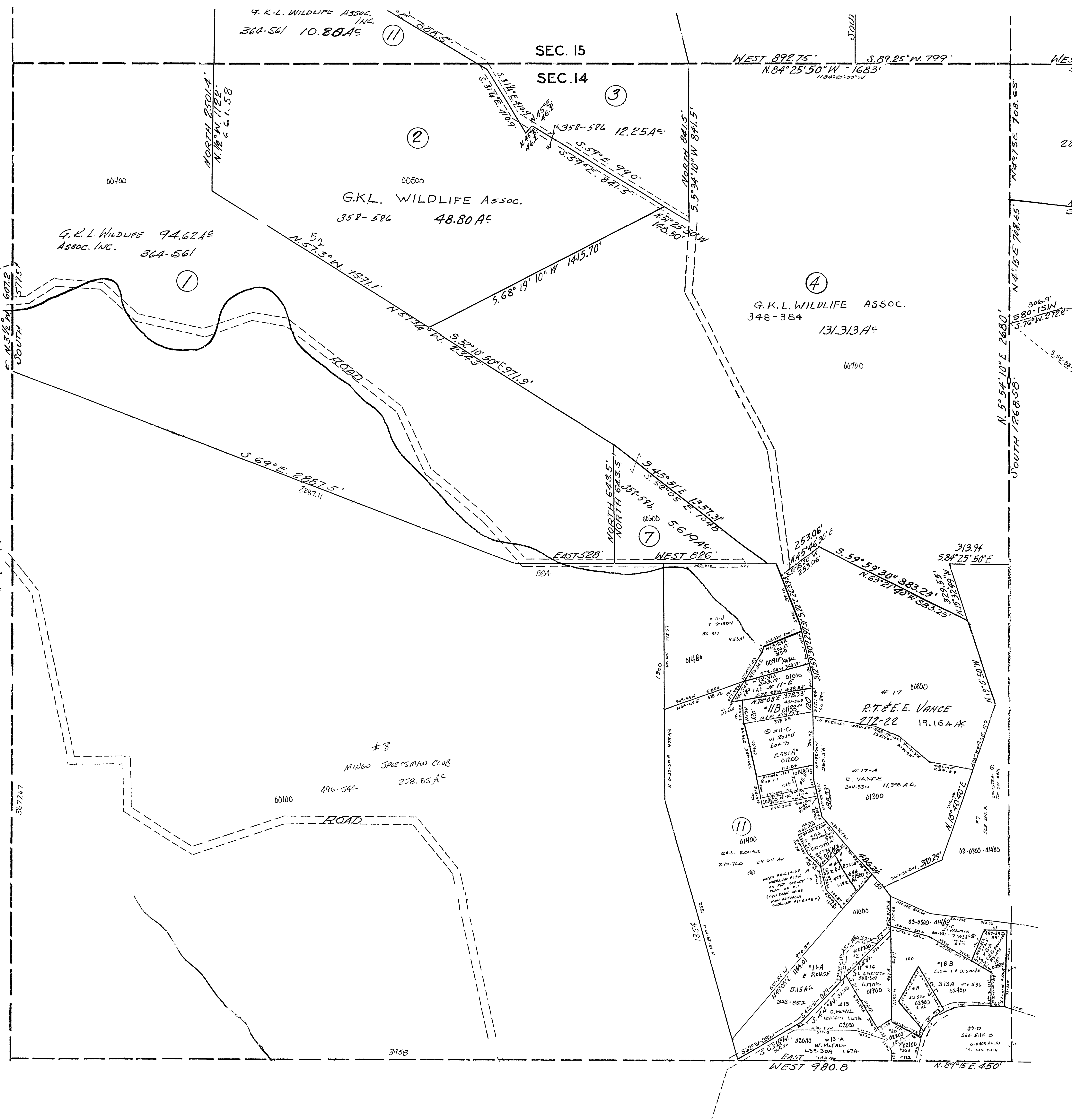


#11-H	GAT STARKBY	474-160	0.259A <sup>c</sup>
#11-D	CAR GRIMES	472-278	0.907A <sup>c</sup>
#11-E	"	"	1.0A <sup>c</sup>
#11-K	GAT STARKBY	470-158	0.344A <sup>c</sup>
#11-H-1	"	470-155	0.504A <sup>c</sup>
#12	R+S ROUSE	49-474	0.373A <sup>c</sup>
#20	C+P PARKS	596-028	0.343A <sup>c</sup>
#20-A	D MCFALL	579-733	0.35A <sup>c</sup>



03-~~1400~~-1400-

CROSS CREEK TWP.  
SECTION 14, T.6, R.2.  
SCALE: 1"=200'

